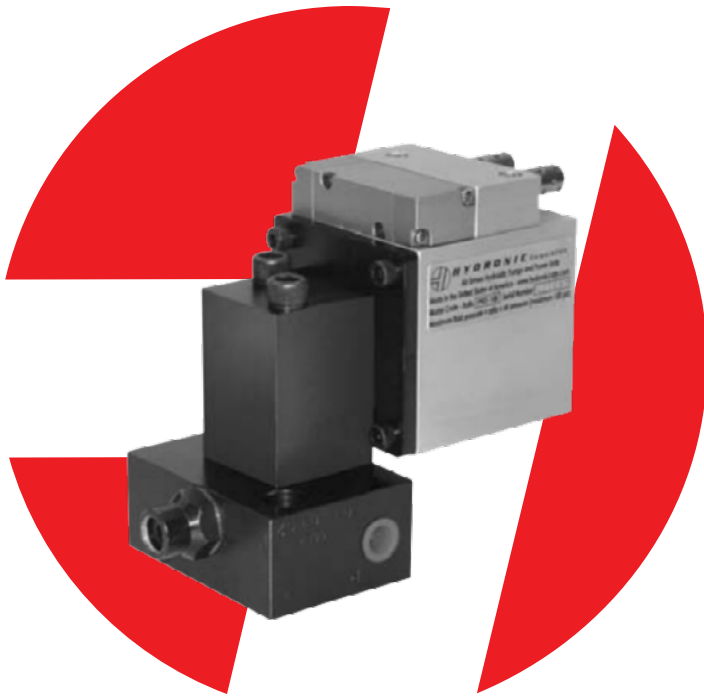


# P901 SERIES



**P901-100-N-0-L with Manifold**

## Applications:



**Intermittent Operations**



**Pressure Sustaining**



**Portable Equipment**



**Hazardous Areas**



**Clamping**



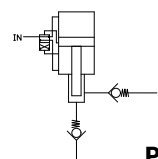
**Workholding**

## Description

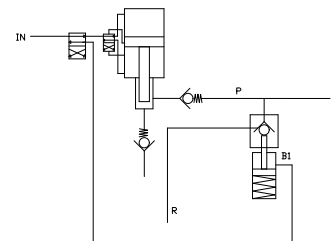
- Double acting pneumatic/single acting hydraulic
- Designed to be used in conjunction with manifolds utilizing cartridge valves or DO3 type valves
- Modular construction and small envelope size
- 10,000 PSI maximum hydraulic pressure
- Up to 1 GPM flow
- Seven intensification ratios available

## Schematics

**P901**



**P901A**



HYDRONIC WARRANTY POLICY: Hydronic, Corp. warrants each product against defects in material and workmanship for a period of 6 months from the date of manufacturing providing its use was in accordance with Hydronic recommendations. If the product fails to perform as warranted, Hydronic will, at its option, repair or replace the product free of charge. The company will not be liable for incidental or consequential damages. We make no other warranty, expressed or implied, including warranties of merchant ability or fitness for a particular purpose.

# P901 SERIES



**P901P**  
with  
1/2  
Gallon  
Tank

**P901P**  
with  
Manifold



## Features:

- Seven ratios available with reservoirs and sub-plates
- High performance, double acting pneumatic motor
- Miniature sizes with good flow rates per minute
- Self-limiting design for maximum cyclic speeds
- Pressure sustaining feature for clamping and work holding
- Manifold interface eliminates screwed connections
- Ideal for cartridge valves and stacking modules
- Reservoirs and custom manifolds available
- Complete power units with valves, reservoirs, air regulators, and gauges are available

P901 Series	P901-6	P901-10	P901-20	P901-40	P901-60	P901-80	P901-100
Air Pressure PSI (Bar)	20 -100 PSI ( 1 1/2 - 7)						
Nominal Pressure Ratio	1:6	1:10	1:20	1:40	1:60	1:80	1:100
Max Oil Pressure PSI (Bar)	600 PSI (41)	1,050 PSI (69)	1,950 PSI (137)	4,200 PSI (290)	6,200 PSI (425)	7,800 PSI (540)	10,000 PSI (690)
Flow GPM	250 CI/MIN	140 CI/MIN	65 CI/MIN	38 CI/MIN	25 CI/MIN	20 CI/MIN	15 CI/MIN
Weight: Pump Only (Kg)	6.5 LBS (3)			5.25 LBS (2.5)			

**NOTE:** Always fit an air filter/regulator with 20 micron rating and 30 scfm capacity.

## Ordering Information:

# P901P-20-N-T15-P-FR

**AIR FILTER**

Filter/  
Regulator FR

### PUMP STYLE

Basic Pump Only P  
Automatic Release Valve Normally closed A  
Automatic Release Valve Normally open O

### RATIO

1:6 6  
1:10 10  
1:20 20  
1:40 40  
1:60 60  
1:80 80  
1:100 100

### SEALS

Buna N  
Flourocarbon V

### MOUNTING

Basic Pump Only 0  
1/2 gallon tank T050  
1 gallon tank T10  
1 1/2 gallon tank T15

### FLUID CONNECTIONS

Basic Pump Only O  
Line Mounting L  
D03 Manifold DH  
Standard Manifold P  
Hi/Low Manifold HL  
Standard Manifold with N/C Automatic Release Valve PA  
Standard Manifold with N/O Automatic Release Valve (Only 6 - 1:40) PO

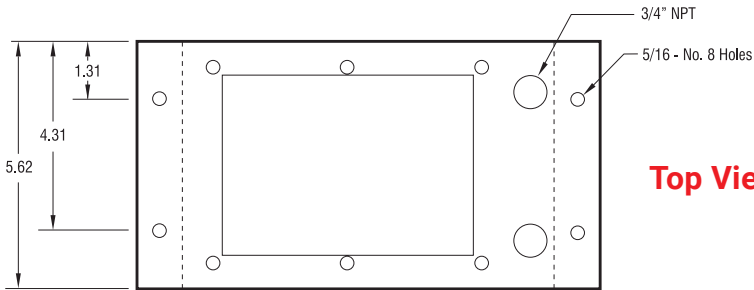
\*O is for ratios 6-20:1 only

### EXAMPLE ORDER: P901P-20-N-T15-P-FR

= P901 pump with no release valve, a 1:20 ratio, Buna seals, a 1 1/2 gallon tank, a standard manifold, and an air filter/regulator.

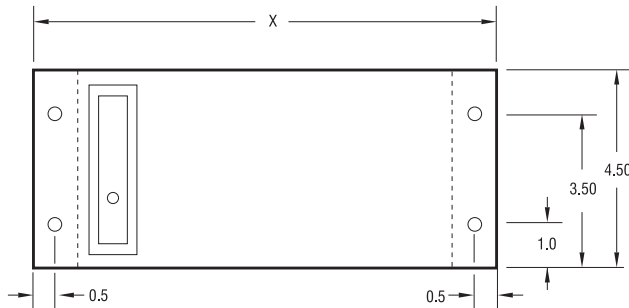
# P901 SERIES

## Reservoir Dimensions



Top View

Front View



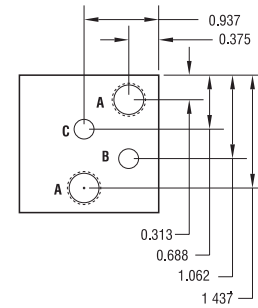
Gal	Designation	Dim	Weight # (kg)
0.5	T050	10.5	8 (3.7)
1.0	T10	13.5	10 (4.5)
1.5	T15	17.5	13 (5.9)

## Manifold Footprint

### High Pressure

#### Fluid Connection 1/4" NPT

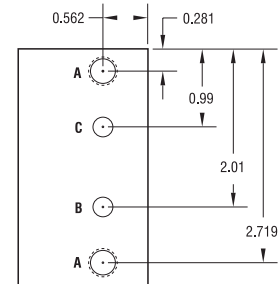
A = 3/8-16 tapped holes  
B = 0.25" suction port  
C = 0.25" outlet port



### Low Pressure

#### Fluid Connection #6 SAE

A = 5/16-18 tapped holes  
B = 0.25" suction port  
C = 0.25" outlet port



## Performance Guides:

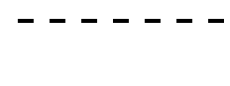
100 PSI  
90 PSI



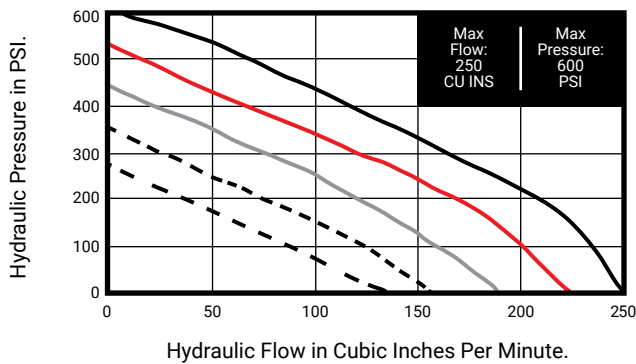
75 PSI  
60 PSI



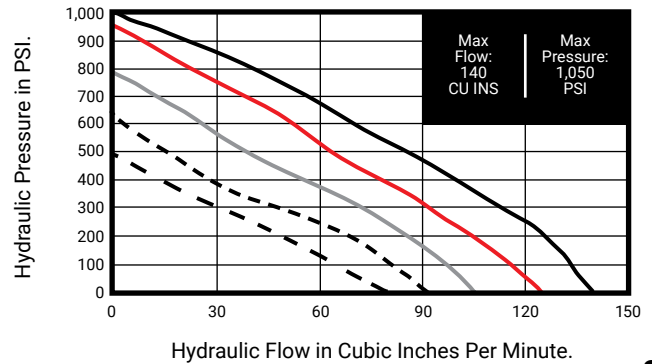
45 PSI



### P901-6 Fluid Flow Against Pressure



### P901-10 Fluid Flow Against Pressure

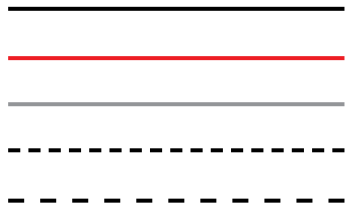


# P901 SERIES

## Performance Guides:

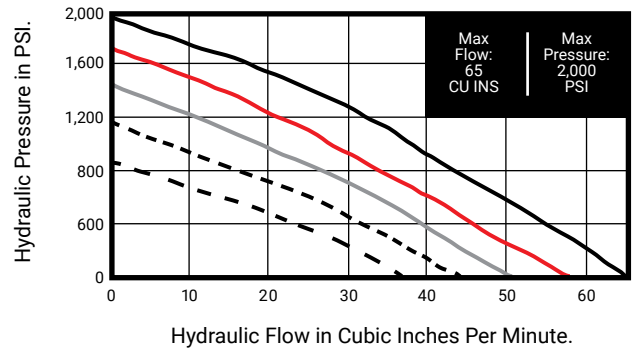
### AIR PRESSURE:

100 PSI  
90 PSI  
75 PSI  
60 PSI  
45 PSI



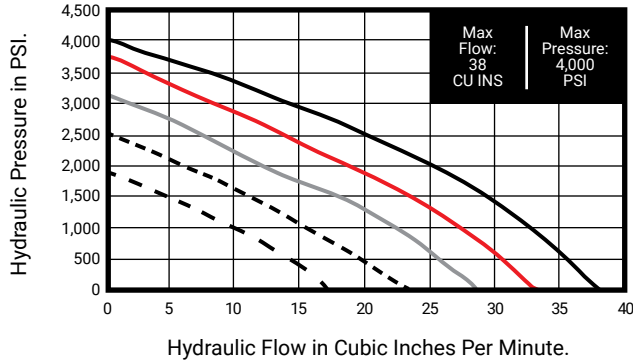
### P901-20

Fluid Flow Against Pressure



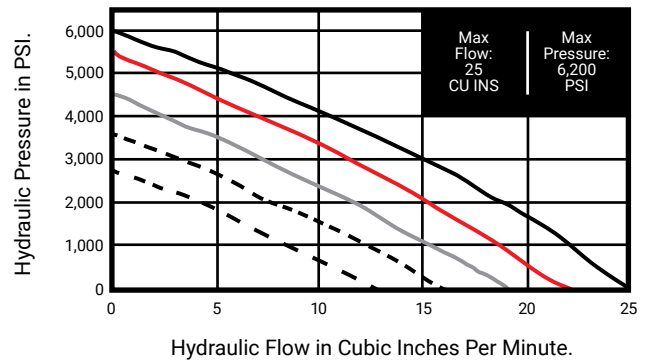
### P901-40

Fluid Flow Against Pressure



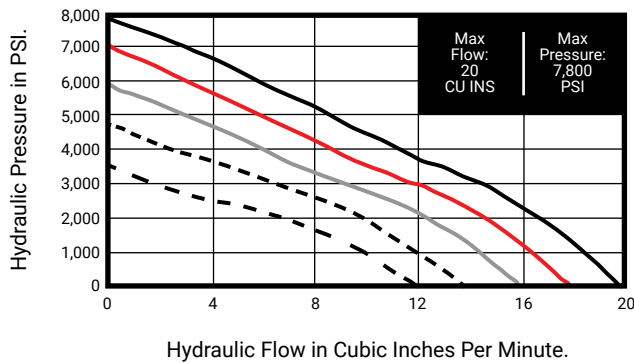
### P901-60

Fluid Flow Against Pressure



### P901-80

Fluid Flow Against Pressure



### P901-100

Fluid Flow Against Pressure

