

# P826 SERIES



**P826A-120-N-R25 with Protective Frame**

## Applications:



**Material Handling**



**Pressure Sustaining**



**Filter Presses**



**Tire Presses**



**Multi-Fluids & Skydrol**



**Portable Equipment**



**Intermittent Operations**



**Hazardous Areas**



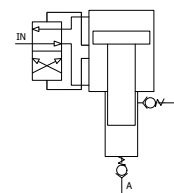
**Clamping**

## Description

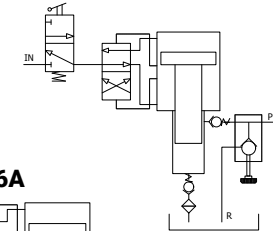
- Double acting pneumatic/single acting hydraulic
- Available with wall brackets for line mounting; flanges for tank mounting
- ATEX Certified (II 2GD cIIB TX)
- 26,500 PSI maximum hydraulic pressure
- Up to 0.5 GPM flow
- Five intensification ratios available

## Schematics

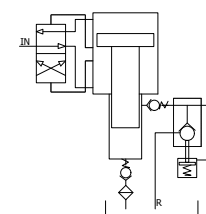
**P826**



**P826M**



**P826A**



**HYDRONIC WARRANTY POLICY:** Hydronic, Corp. warrants each product against defects in material and workmanship for a period of 6 months from the date of manufacturing providing its use was in accordance with Hydronic recommendations. If the product fails to perform as warranted, Hydronic will, at its option, repair or replace the product free of charge. The company will not be liable for incidental or consequential damages. We make no other warranty, expressed or implied, including warranties of merchant ability or fitness for a particular purpose.

# P826 SERIES



**P826M**  
with 2 1/2 Gallon Tank



**P826A**  
with 2 1/2 Gallon Tank

P826 Series P826-65 P826-80 P826-120 P826-170 P826-265

Air Pressure PSI (Bar)	20/100 PSI (1 1/2 - 7)				
Nominal Pressure Ratio	1:65	1:80	1:120	1:170	1:265
Max Oil Pressure PSI (Bar)	6,500 PSI (450)	8,000 PSI (545)	12,000 PSI (827)	17,000 PSI (1,172)	26,500 PSI (1,827)
Flow CI/MIN	115 CI/MIN	112 CI/MIN	73 CI/MIN	53 CI/MIN	40 CI/MIN
Weight: Pump Only Lbs (Kg)	25 LBS (11.3)				

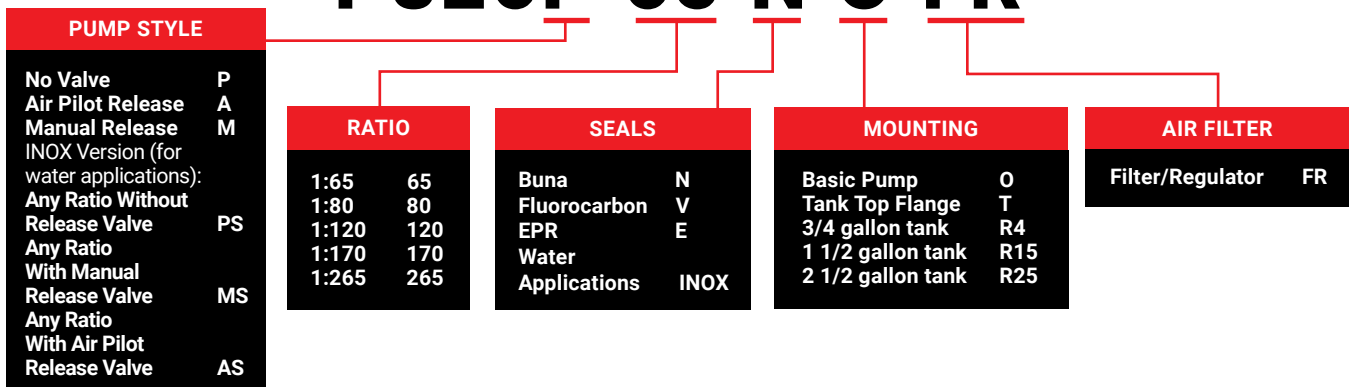
## Features:

- Five ratios available with reservoirs
- High performance, double acting pneumatic drive section
- Excellent for high pressure fluid power or clamping circuits
- Wall brackets for line mounting, flanges for tank mounting
- Reservoirs available in three sizes of 3/4, 1 1/2, and 2 1/2 gallons, others available on request
- Pressure release valve option, manual and air operated
- No directional valves are needed for single acting actuators
- Models available for water applications
- Ultra-high-pressure ratings are excellent for material and hydrostatic testing

**NOTE:** Always fit an air filter/regulator with 20 micron rating and 30 scfm capacity.

## Ordering Information:

# P826P-65-N-O-FR

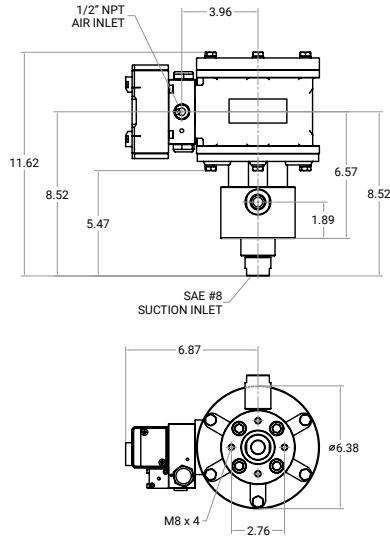


**Example Order:** P826P-65-N-O-FR = P826 pump without valve, a 1:65 ratio, Buna seals, a basic pump, and an air filter/regulator.

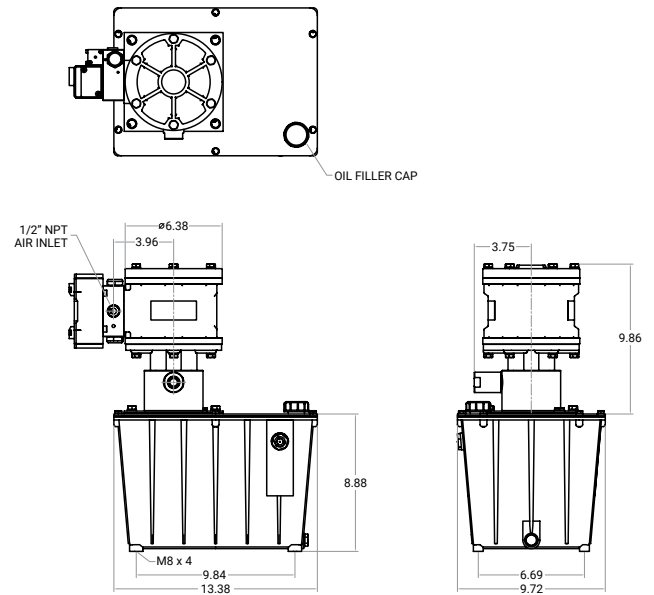
# P826 SERIES

## Dimensional Data:

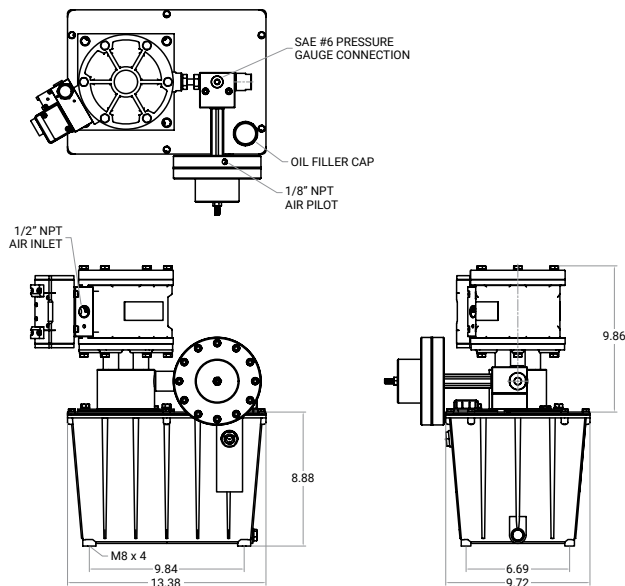
Pump Dimensions without Reservoir (Type O)



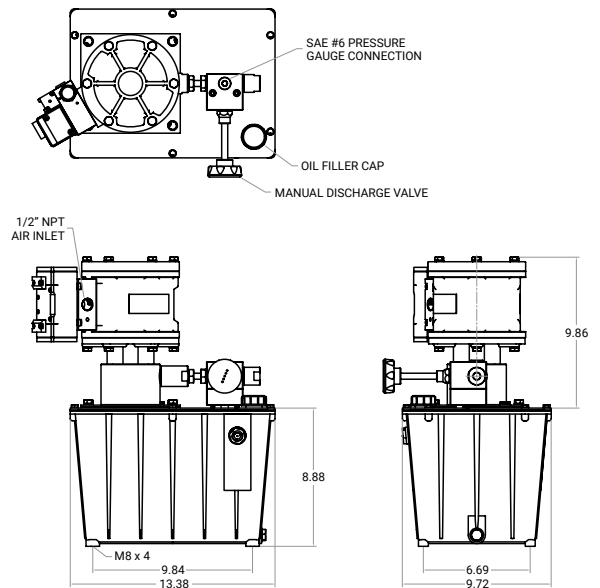
Pump Dimensions with 2 1/2 Gallon Tank (Type R25)



Pump Dimensions with Air Piloted Release Valve 2 1/2 Gallon Tank (Type R25)



Pump Dimensions with Manual Release Valve 2 1/2 Gallon Tank (Type R25)

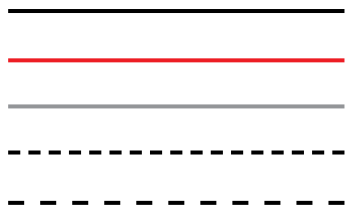


# P826 SERIES

## Performance Guides:

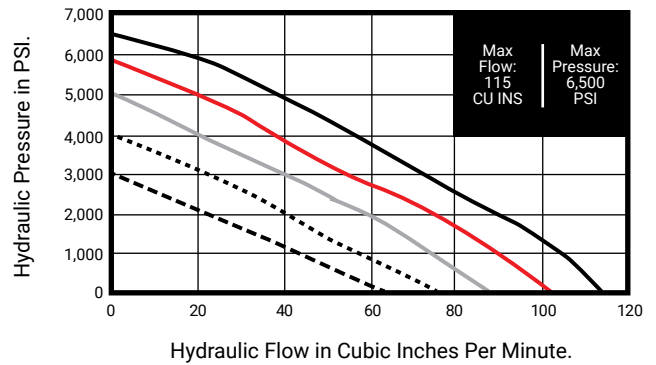
### AIR PRESSURE:

100 PSI  
90 PSI  
75 PSI  
60 PSI  
45 PSI



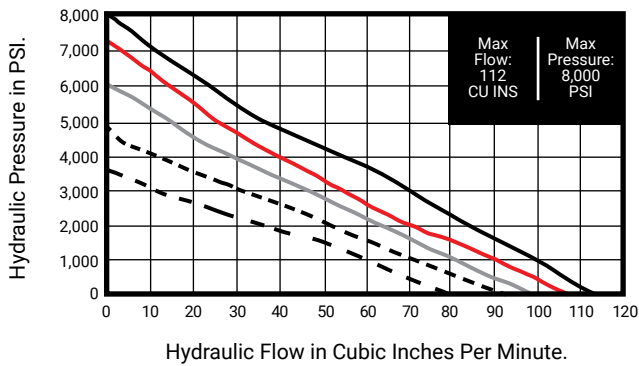
### P826-65

Fluid Flow Against Pressure



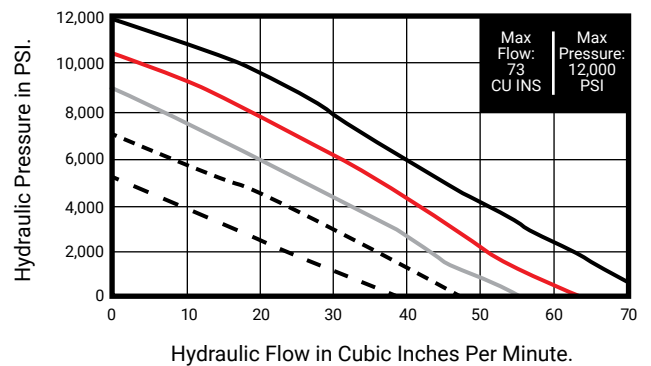
### P826-80

Fluid Flow Against Pressure



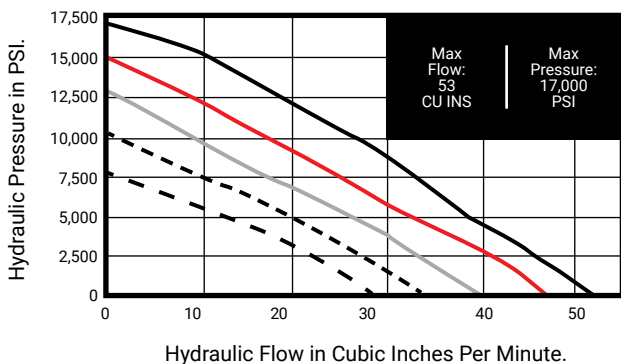
### P826-120

Fluid Flow Against Pressure



### P826-170

Fluid Flow Against Pressure



### P826-265

Fluid Flow Against Pressure

