

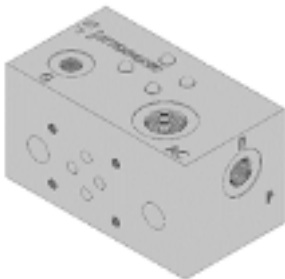
# Manifold Blocks

## NFPA D03/CETOP3/NG6 Mounting Pattern

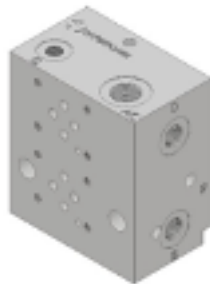
These range of manifolds mount directly to the pumps while providing 1 or 2 valve mount stations. The P901 series manifolds can be mounted directly to a reservoir.

Pump Series	Ratio	# of Stations	Part Number	Port Sizes		
				Pressure/Return	Gauge	Accumulator
<b>P820</b>	All	1	A820-XX-N-DSM	#6 SAE	#6 SAE	#8 SAE
	All	2	A820-XX-N-DSM2	#6 SAE	#6 SAE	#8 SAE
<b>P901</b>	6, 10, 20	1	S901-LP-N-6216	#4 SAE	#4 SAE	-
	40, 60, 80, 100	1	S901-HP-N-6216N	1/4" NPT	1/4" NPT	-

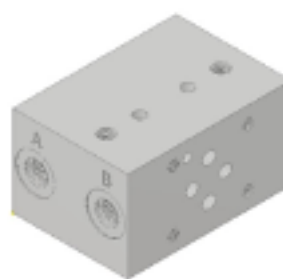
**A820-XX-N-DSM**



**A820-XX-N-DSM2**



**S901-LP-N-6216**



**S901-HP-N-6216N**



**HYDRONIC WARRANTY POLICY:** Hydronic, Corp. warrants each product against defects in material and workmanship for a period of 6 months from the date of manufacturing providing its use was in accordance with Hydronic recommendations. If the product fails to perform as warranted, Hydronic will, at its option, repair or replace the product free of charge. The company will not be liable for incidental or consequential damages. We make no other warranty, expressed or implied, including warranties of merchant ability or fitness for a particular purpose.

# Manifold Blocks

## Standard Porting

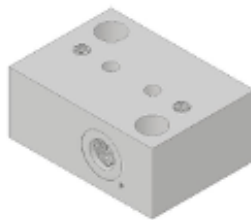
These range of manifolds mount directly to the pumps while providing fluid connections. The P901 series manifolds can be mounted directly to a reservoir.

Pump Series	Ratio	Part Number	Port Sizes	
			Pressure/Return	Gauge
<b>P820</b>	All	A820-XX-N-SPB	#8 SAE	#4 SAE
<b>P901</b>	6, 10, 20	S901-XX-N-6210	#6 SAE	-
	40, 60, 80, 100	S901-XX-N-6204	1/4" NPT	-

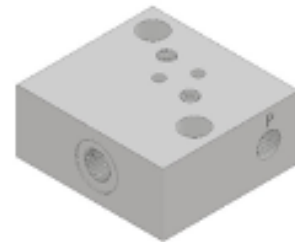
**A820-XX-N-SPB**



**S901-XX-N-6210**



**S901-XX-N-6204**



## Side Porting

This manifold mounts directly to the pumps while providing fluid connections 90° from standard.

Pump Series	Ratio	Part Number	Port Sizes	
			Pressure/Return	Gauge
<b>P820</b>	All	A820-XX-N-SSPB	#8 SAE	#4 SAE

**A820-XX-N-SSPB**



# Manifold Blocks

## Smoothing Kit

This manifold mounts directly to the pumps while providing fluid standard fluid connections with an additional port for the addition of an accumulator.

Pump Series	Ratio	Part Number	Port Sizes	
			Pressure/Return	Gauge
<b>P820</b>	All	A820-XX-N-SKM	#8 SAE	#4 SAE

**A820-XX-N-SKM**

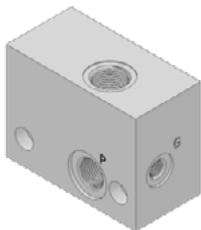


## Pressure Release Valve

This manifold mounts directly to the pumps while providing fluid standard fluid connections with an additional port for the addition of a pressure release valve. The P901 series manifolds can be mounted directly to a reservoir.

Pump Series	Ratio	Part Number	Port Sizes	
			Pressure/Return	Gauge
<b>P820</b>	All	A820-XX-N-PRV	#8 SAE	#4 SAE
<b>P901</b>	6, 10, 20	S901A-XX-N-6210	#6 SAE	-
	40, 60, 80, 100	S901A-XX-N-6204	1/4" NPT	-

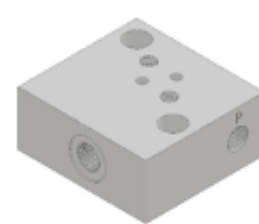
**A820-XX-N-PRV**



**S901A-XX-N-6210**



**S901A-XX-N-6204**



# Manifold Blocks

## Hi/Lo Manifold

This manifold mounts directly to the pumps while providing standard fluid connections with an additional port for the addition of an accumulator.

Pump Series	Ratio	Part Number	Port Sizes	
			Pressure/Return	Gauge
<b>P901</b>	All	S901-XX-N-6205	1/4" NPT	-

**S901-XX-N-6205**



## Line Mounted

These range of manifolds mount directly to the pumps while providing fluid connections.

Pump Series	Ratio	Part Number	Port Sizes	
			Pressure/Return	Gauge
<b>P901</b>	6, 10, 20	S901-LP-N-6217	1/4" NPT	-
	40, 60, 80, 100	S901-HP-N-6218	1/4" NPT	-

**S901-LP-N-6217**



**S901-HP-N-6218**

