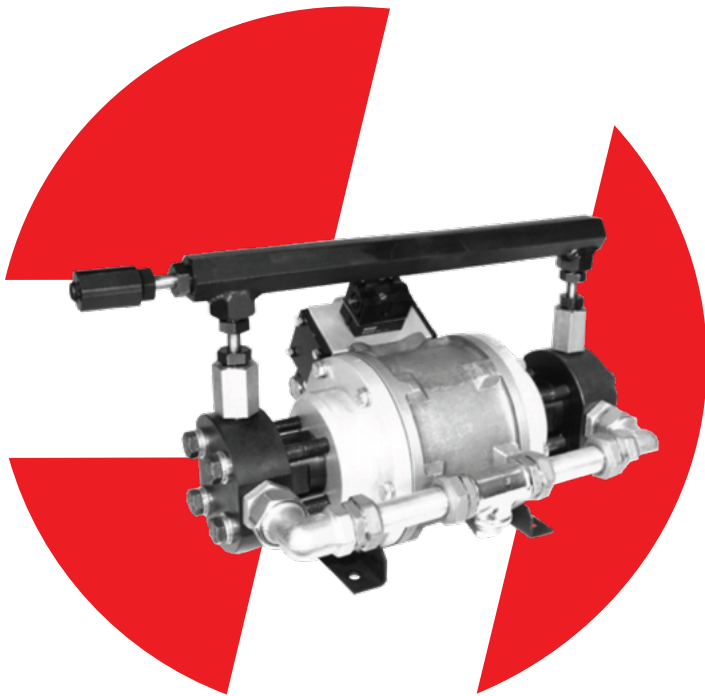


# P825 SERIES



**P825-65-N-0**

## Description

- High performance, double-acting pneumatic drive section.
- 26,500 PSI Maximum hydraulic pressure.
- Four intensification ratios available.
- Stainless steel models available.

## Applications:



**Material Handling**



**Pressure Sustaining**



**Clamping**



**High Pressure Testing**



**Multi-Fluids & Skydrol**



**Workholding**



**Intermittent Operations**



**Hazardous Areas**

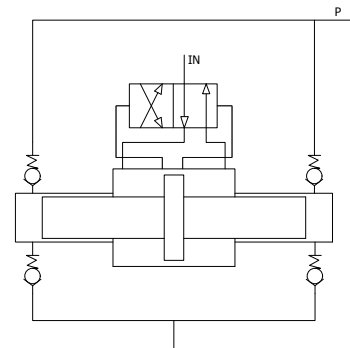


**Water Hydraulics\***

\*Including deionized or demineralized water.

## Schematics

**P825**



**HYDRONIC WARRANTY POLICY:** Hydronic, Corp. warrants each product against defects in material and workmanship for a period of 6 months from the date of manufacturing providing its use was in accordance with Hydronic recommendations. If the product fails to perform as warranted, Hydronic will, at its option, repair or replace the product free of charge. The company will not be liable for incidental or consequential damages. We make no other warranty, expressed or implied, including warranties of merchant ability or fitness for a particular purpose.

# P825 SERIES

**P825**  
with  
Basic  
Pump



P825 Series	P825-65	P825-120	P825-170	P825-265
Air Pressure PSI (Bar)	20/100 PSI (1 1/2 - 7)			
Nominal Pressure Ratio	1:65	1:120	1:170	1:265
Max Oil Pressure PSI (Bar)	6,500 PSI (450)	12,000 PSI (827)	17,000 PSI (1,172)	26,500 PSI (1,827)
Flow CI/Min	160 CI/MIN	100 CI/MIN	73 CI/MIN	57 CI/MIN
Weight: Pump Only Lbs (Kg)	40 LBS (18)			

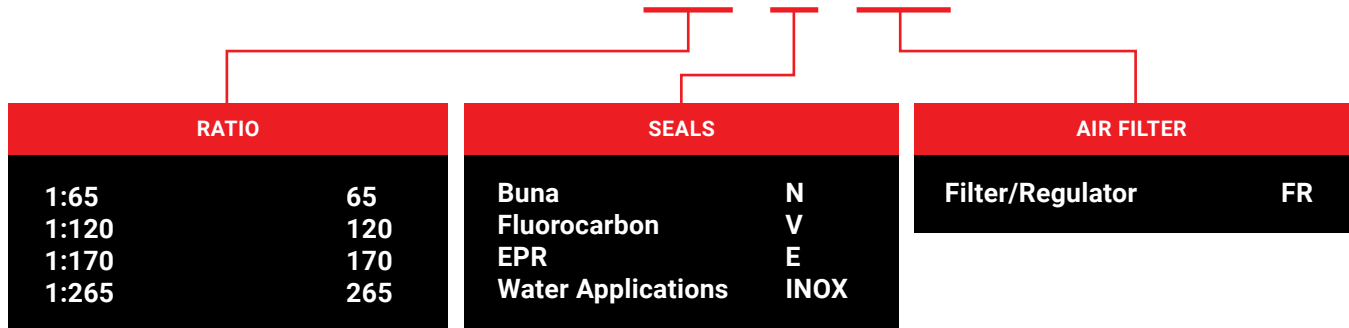
## Features:

- Four ratios available, all of which can either be stand alone or tank mounted versions.
- High performance, double-acting pump with opposing pumping elements used in high pressure hydraulic circuits for pressurization, resistance, and deformation testing.
- High efficiency air drive section.
- Double-acting pump elements provide consistent fluid pressures.
- Hydraulic chambers are made of ultra-strong components, which makes this pump ideal for long-term pressure sustaining applications such as burst testing and nondestructive testing.
- Delivers pressures up to 26,500 psi.
- Available in stainless steel and for use in water applications (INOX).

**NOTE:** Always fit an air filter/regulator with 20 micron rating and 30 scfm capacity.

## Ordering Information:

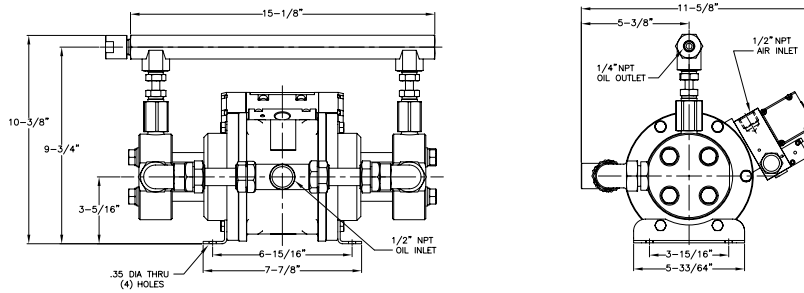
# P825-65-N-FR



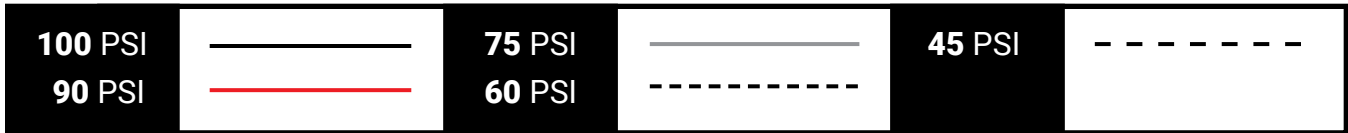
**EXAMPLE ORDER:** P825-65-N-FR = P825 pump with a 1:65 ratio, Buna seals, and an air filter/regulator.

# P825 SERIES

## Dimensional Data:

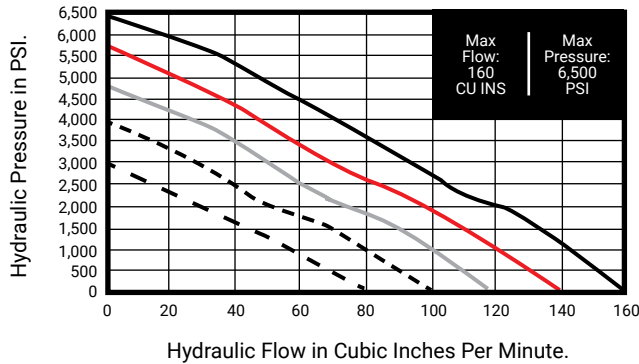


## Performance Guides:



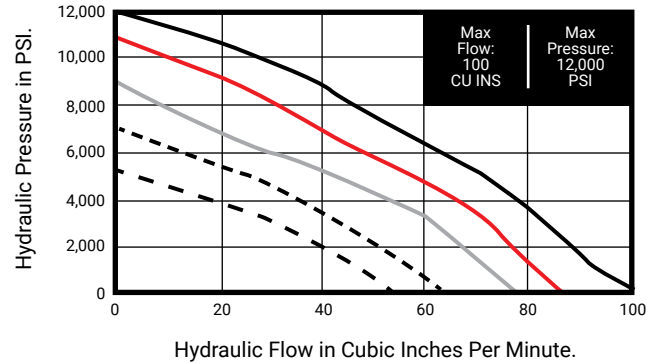
### P825-65

Fluid Flow Against Pressure



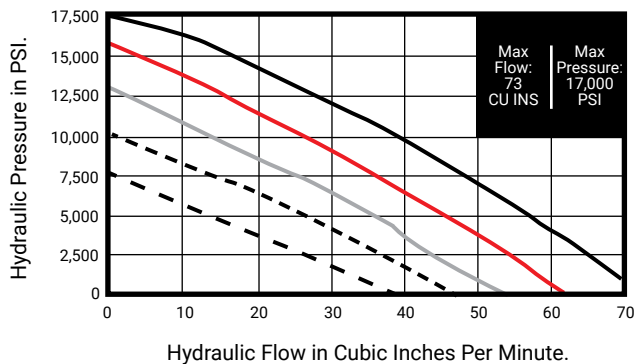
### P825-120

Fluid Flow Against Pressure



### P825-170

Fluid Flow Against Pressure



### P825-265

Fluid Flow Against Pressure

